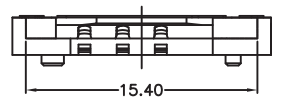
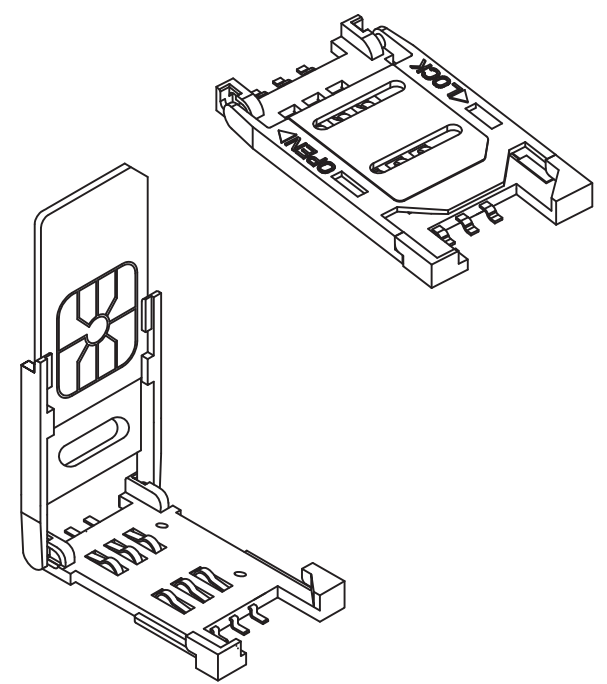
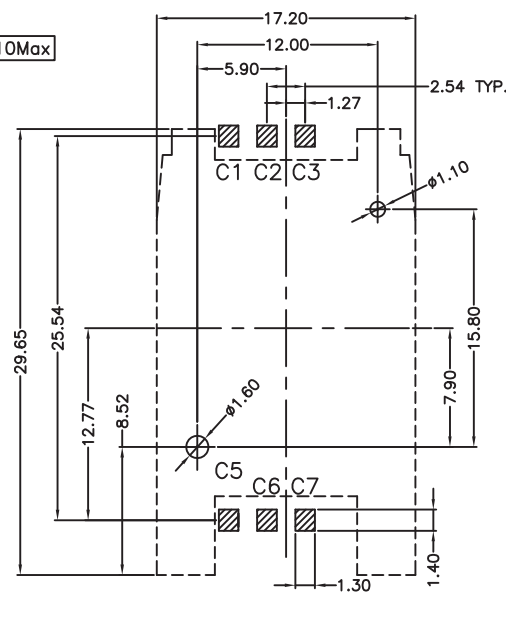
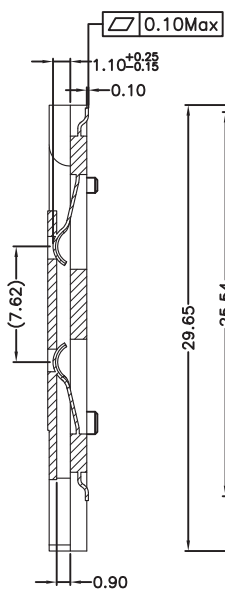
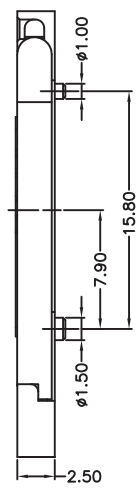
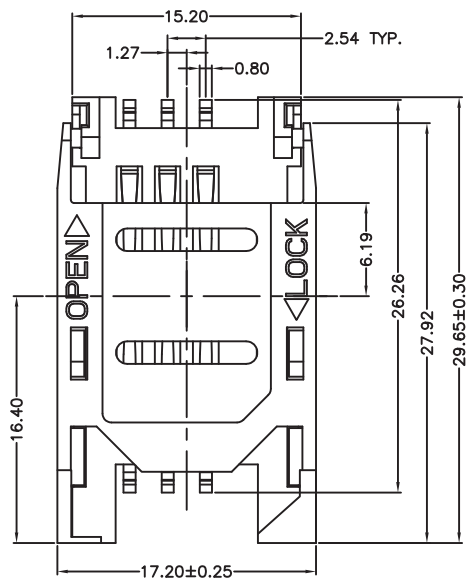
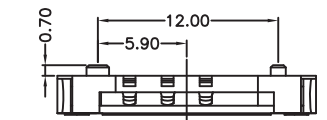


REV.	DESCRIPTION	DATE	DWG.	CHKD
0	PROPOSED	15/01/31	Bens	YC



MATERIALS

HOUSING: HI-TEMP. PLASTIC (UL 94V-0), BLACK
 TERMINAL: PHOSPHOR BRONZE, GOLD PLATED ON CONTACT AREA TIN PLATING ON SOLDER TAIL

SPECIFICATION

CURRENT RATING: 0.5 AMP MAX
 DIELECTRIC WITHSTANDING: 500V AC FOR ONE MINUTE
 CONTACT RESISTANCE: 30m OHMS MAX
 INSULATION RESISTANCE: 1000M OHMS MIN AT DC 500V
 OPERATION TEMPERATURE: -25°C~+85°C

PIN NO.	NAME
C1	Vcc
C2	RST
C3	CLK
C5	GND
C6	Vpp
C7	I/O

CUSTOMER	*****	GENERAL TOLERANCE	±0.2 ±3°	SCALE	1:1	SIZE	A4	UNIT:mm	UNIT:mm
CUSTOMER PART NO.	*****	PART NO.	1-3050-111R000			REV.	0	(SHEET 1 OF 5)	
Connectec Electronics Co., Ltd.		NAME	SIM Card Hinge Type 6 Pin With Post						
APP.	'15/01/31 John	CHKD	'15/01/31 Klasu	DWG.	'15/01/31 Leon	Des'gn No.	1-3050-111R000		